

PRELIMINARY OWNER'S MANUAL

MISMATCHER CONNECT MINI
OCTOBER 2022
REVISION α



I. INTRODUCTION

Thank you for acquiring our brand new MisMatcher Connect Mini.

This is the first analog video glitcher in our lineup of new, innovative and affordable EuroRack modules, from Freedom Enterprise.

This module is based around the original MisMatcher01, utilizing a variation of the Enhancer and Sync Mixer as its main circuitry. It also features four switchable parameters in the Enhancer and Sync Mixer that enables you to pair the MisMatcher Connect Mini with your other EuroRack modules, through standardized Gate signals.

By reading this manual, even though it's still in its preliminary form, you'll get an understanding of how to set up and use your brand new MisMatcher Connect Mini, to its fully extent.

-Pedro Silva

II. INSTALATION

Proceed to connect the power cable from your EuroRack case to the MisMatcher Connect Mini. If you have a 10-pin power connector, you can connect it to the MisMatcher Connect power header in any orientation, as shown below.



Figure 1 10-pin connection



Figure 2 10-pin connection

If you have a 16-pin power connector, connect it respecting the pinout below.

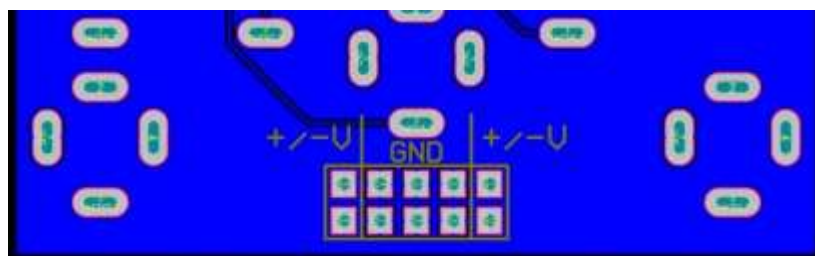





Figure 3 Power header pinout

Finish by screwing the module to your EuroRack case.

III. ENHANCER

Where most of the glitching happens.

Knobs:

- Feedback 1 
- Feedback 2 
- Gain Controls 

3.5mm I/O:

Enhancer Input: Composite video input, 75-ohm termination.

Enhancer Output: Composite video output, 75-ohm termination.

Feedback 1, Feedback 2 and Gain Gate Input: Enables and disables the FB1, FB2 and Gain controls for the Enhancer. **Normally enabled** when nothing connected to the jack.



Figure 4 Enhancer

IV. SYNC MIXER

This module is used to restore sync information on video signals to improve stability. Sync information is stripped from **Sync Reference Input**, mixed with **Sync Mixer Input** and exists through the **Sync Mixer Output**. Poor man's TBC.

Glitching will occur if Sync In signal is attenuated.

Knobs:

Sync Reference Input Attenuator ✖

Sync Mix Amount ⊕

3.5mm I/O:

Sync Mixer Input: Composite video input, 75-ohm termination.

Sync Reference Input: Composite video input.

Sync Mixer Output: Composite video output, 75-ohm termination.

Low Pass Filter Gate Input: Enables and disables the Low Pass Filter for the Sync Mixer. **Normally disabled** when nothing connected to the jack.



Figure 5 Sync Mixer

MisMatcher Connect Mini
PRELIMINARY OWNER'S MANUAL
Revision Alpha October 2022
FreedomEnterprise.pt
Written by Pedro Silva